

The type CWY Diesel Engine Emergency Pump is driven by the diesel engine and it is produced based on the stipulations of the CCS Rules and Regulations for the Construction and Classification of Sea-going Steel Ships 1996 and the International Convention For the Safety of Life at Sea. (SOLAS Convention).

It can be used mainly for emergency service, fire-fighting, drainage, and deck washing and so on. Also it can be used for the company of factory, sea port, cargo store etc.

- Light weight, compact structure.
- Fast water coming-out and self-priming.
- Easy installation/service.
- Convenient maintenance.
- Corrosive resistance(sea water pump)
- Starting both by manual and batteries.
- Fixed and movable type available.
- Full range of accessories provided.

PUMP DESIGN

Centrifugal single-stage pumps (CWZ self-priming model) in bronze(ZcuZn16Si4) material for pump casing, body and impeller, highly resistant to sea water corrosion and cavitation.

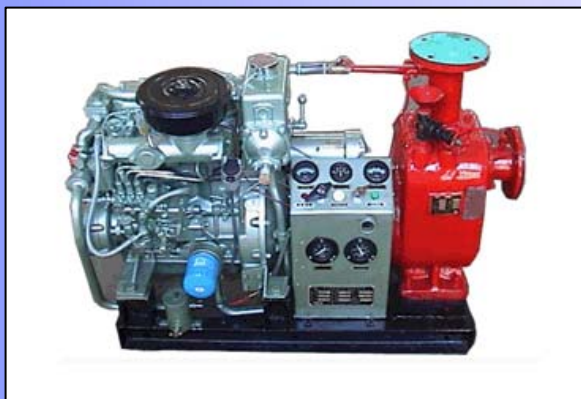
Oversized stainless steel shaft to minimize deflection due to hydraulic loads, material 1Cr18Ni9Ti.

High quality mechanical seal with hard faces, in material carbon, ceramics, stainless steel material.

Thrust bearing fitted into the pump to avoid axial load on engine shaft.(optional).

Casing and cover with removable aluminum-bronze wear rings.(optional for big power pump).

External high vacuum pump if pump is not self-priming.



DIESEL ENGINE

Single cylinder, or multi-cylinder for big power type, four-stroke type with indirect injection.

Air cooled, or water cooled(closed circulation) for big power type by bronze exchanger with zinc anode.

Compact construction, dry air filter, cooled exhaust gas, anticorrosion treatment for marine environment.

Distribution by heavy-duty no-maintenance belt or direct connection with the pump(if speed is same).

Dashboard with warning lights and acoustic alarm, indication of speed, temperature, battery voltage, working hours(optional).

Electric starting by external battery provided with fast connector.

External fuel reservoir for one hour of uninterrupted operation plus internal fixed reserve tank at the base bottom to avoid pump stop during refueling.

Design and setting specific for on board firefighting service.

STANDARD ACCESSORIES.

Besides the pump, diesel engine, and common base, Standard accessories as following is provided: starter and its panel, suction pipe and fitter, exhaust air pipe, battery and battery charge connection cable, vacuum and pressure gauges and so on, tyres are provide for movable type.

Optional accessories:

Fire hose, quick connection flange and delivery nozzle.